

THE **SHIFT** FURNITURE

Common Area Solution





THE SHIFT
FURNITURE®



THE SHIFT
FURNITURE®





Trademark Info- The Shift Furniture Logo and Wording are a registered trademark of PHG Enterprises LLC.

Our Story

The Shift Furniture group came about to meet a basic need for most designers. That need was to fill the space that was given to them. Designers are always faced with the problem when going into any design project. Each project is different. The first question is always, how am I going to fill the space.

The Shift group is uniquely designed to accommodate any space. It is modular. It is basic yet attractive. It features both forward facing and rear facing seating. It can fit into corners or round them off in a room. The special alligator clips that are attached to each piece of Shift make it connectable. The two-tone design allows for more vibrant colors.

The Shift is also designed to last. It features 2.5 density foam with 45 lbs. ILD. This will make the Shift seating last for at least 10 years of heavy use. It also has a super soft gel foam topper with fiber wrap. This adds comfort and cooling during a long sit.

The Shift ships fully carton making it available for LTL shipping.

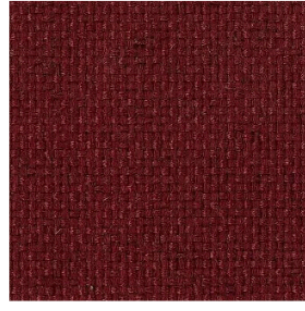
It is available at Phgenterprises.net



Shire Patina



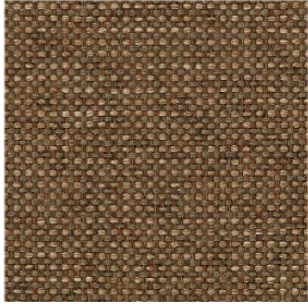
Shire Ascot



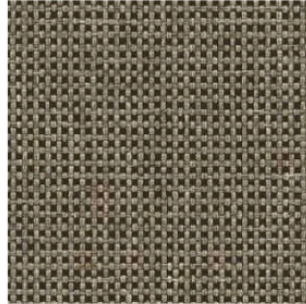
Sherpa Maroon



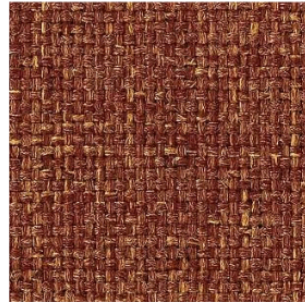
Shire Red Rose



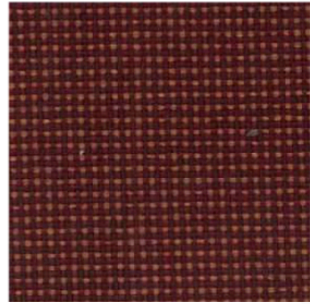
Shire Koala



Shire Fossil



Sherpa Autumn



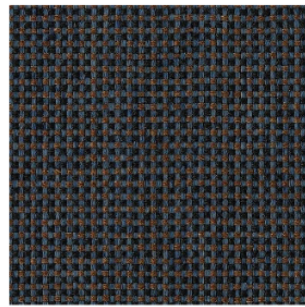
Shire Bricktown



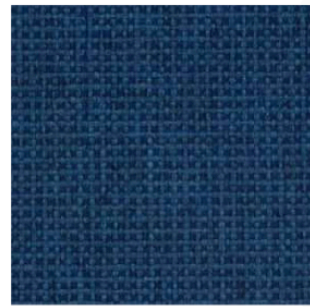
Shire Hopsack



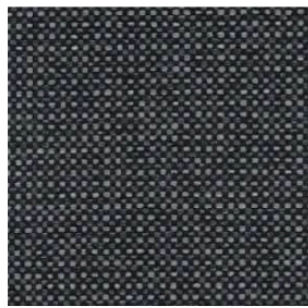
Shire Stonewall



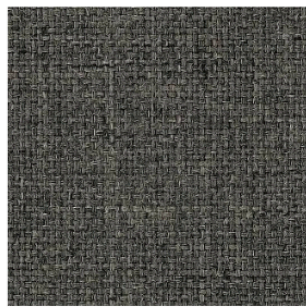
Shire Titan Blue



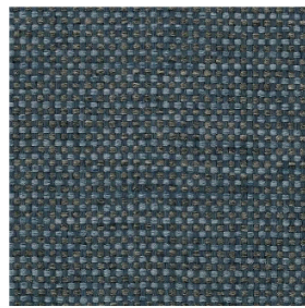
Shire Commodore



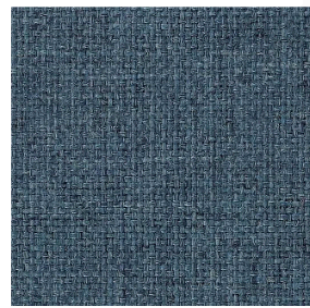
Shire Black Marble



Sherpa Grey Heather



Shire Steel Blue



Sherpa Academy



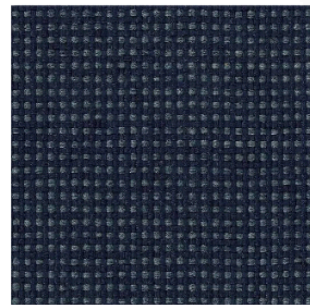
Shire Sesame



Sherpa Brown Haze



Shire Espresso



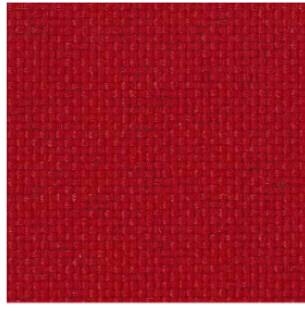
Shire Ink

Available Woven Fabrics
Email for Fabric Availability - sales@phg-ent.com

Single and 2 Tone Options Available



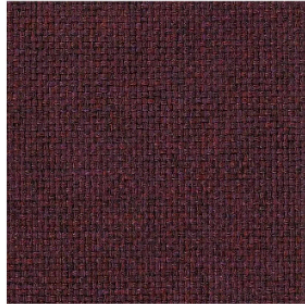
Sherpa Scarlet



Sherpa Cardinal



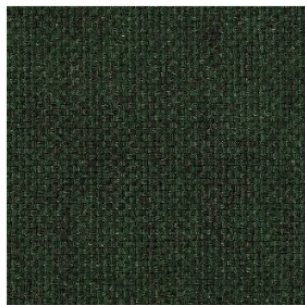
Shire Country



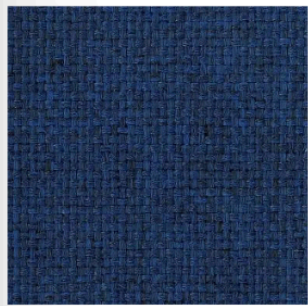
Sherpa Grape



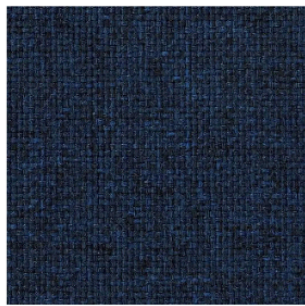
Sherpa Indigo



Sherpa Billard



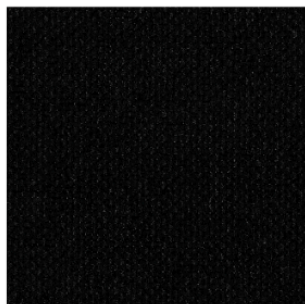
Sherpa Royal



Sherpa Dark Blue



Sherpa Navy



Sherpa Black





Lucid



Fiesta



Stone



Ocean



Cordovan



Bordeaux



Safari



Straw



Williamsburg



Grape



Luggage



Chili



Lucid



Steel



Buff



Balsa



Green Apple



Lipstick



Stratus



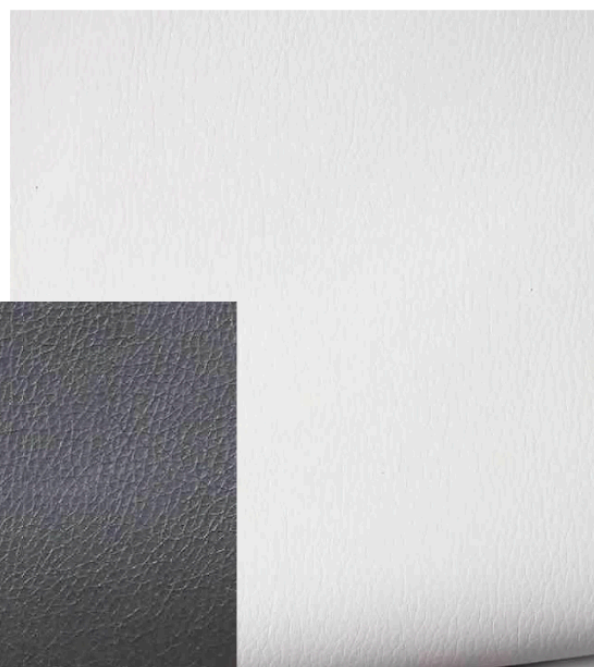
Sage

Available Polyurethane Vinyl Fabrics

For any questions about colors or lead time contact us at 423-730-0123



Flax



Snow



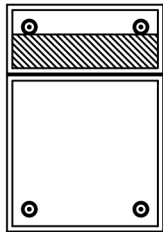
Black

Content: 100 Polyurethane
Backing: 89 Polyester; 11 Rayon
Finish: Antimicrobial silver ion technology
Repeat: n/a
Weight: 27.2 oz. / lin. yd.
Width: 54 inches
abrasion: Heavy Duty Exceeds 200,000 cycles
(Wyzenbeek cotton duck Abradant) (ASTM D4157)
light fastness: Class 4/200 hrs. min. (AATCC16A)
color fastness: Class 4 (ASTM D3597, AATCC 8) Wet
Class 4 (ASTM D3597, AATCC 8) Dry
physical properties: 130 lbs. warp, 113 lbs. weft (ASTM D5034) Breaking Strength
47 lbs. warp, 55 lbs. weft (ASTM D4034) Seam Slippage
50,000 cycles (CFFA 10) Flex Resistance
Pass (CFFA 6a) Cold Crack
Pass (ISO 1419) 5 weeks

THE SHIFT
FURNITURE®

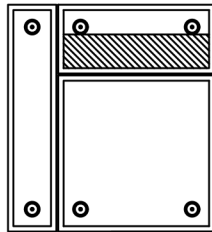
THE SHIFT 3000 MODULAR GROUP

\$275



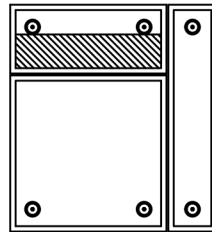
3006-21
ARMLESS
CHAIR

\$387



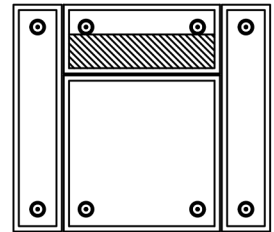
3006-6L
LAF
CHAIR

\$387



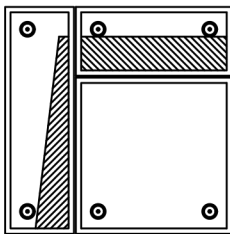
3006-6R
RAF
CHAIR

\$499



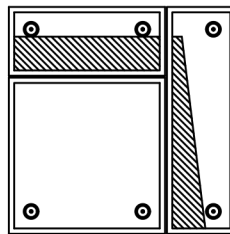
3002-6
TWO ARM
CHAIR

\$387



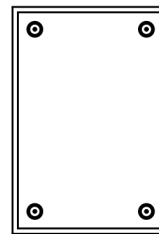
3009-L
LAF
WEDGE

\$387



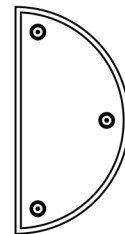
3009-R
RAF
WEDGE

\$237



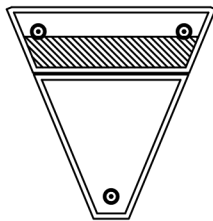
3003-21
OTTOMAN

\$225



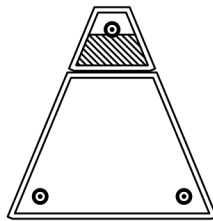
3003-R
RADIUS
OTTOMAN

\$312



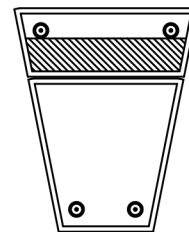
3009-45IS
45° INSIDE
WEDGE

\$312

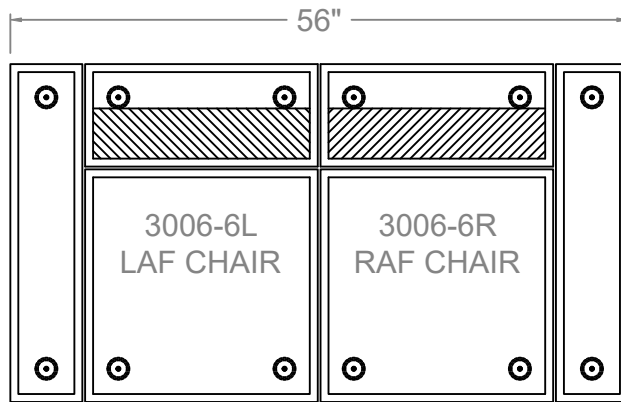


3009-45OS
45° OUTSIDE
WEDGE

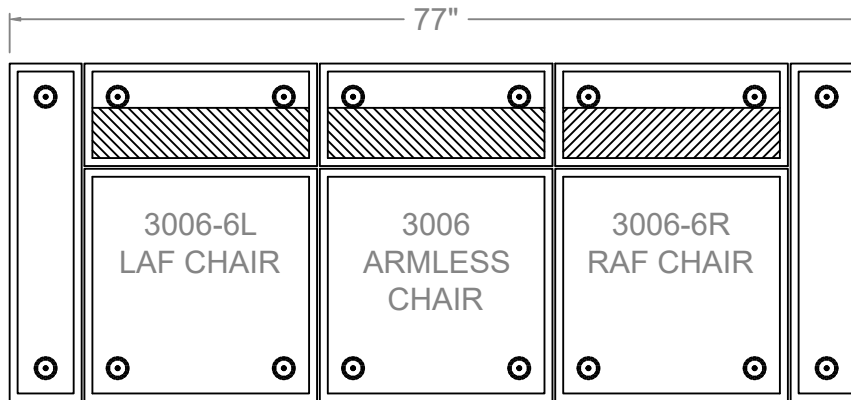
\$312



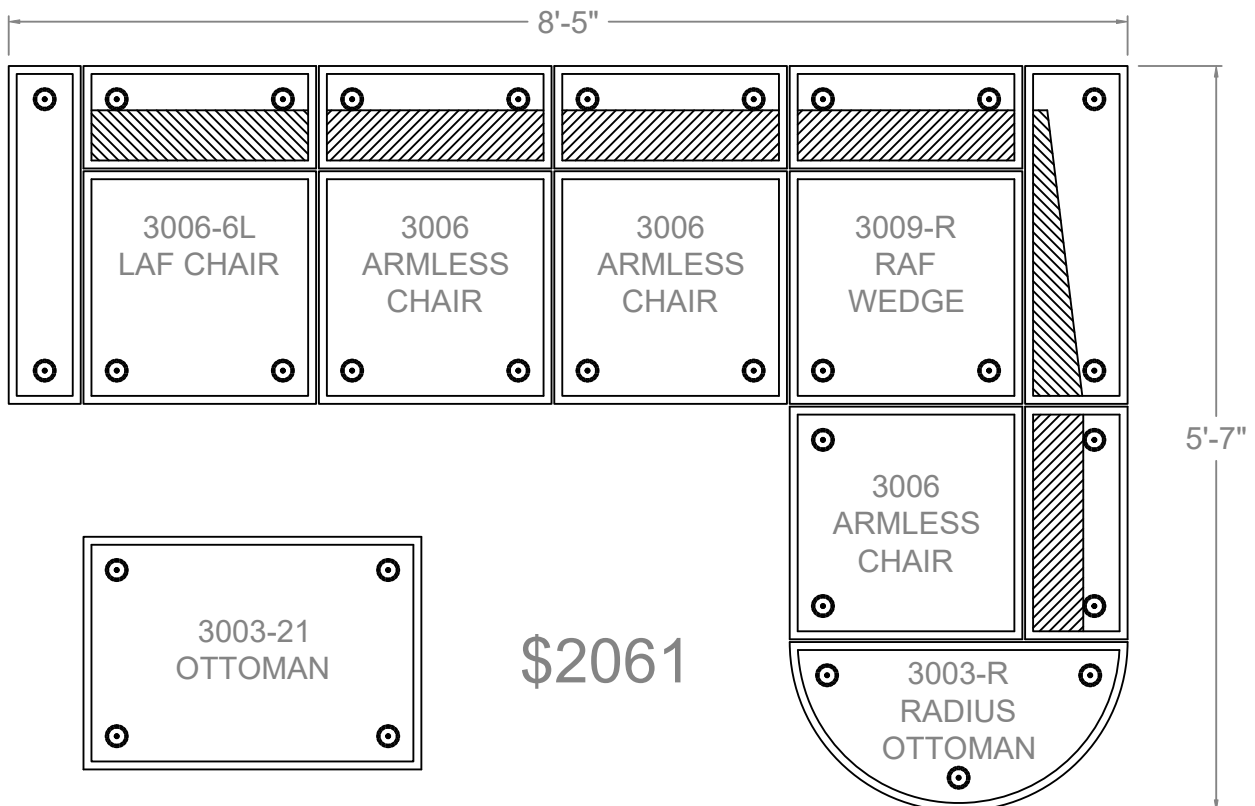
3009-22IS
22° INSIDE
WEDGE



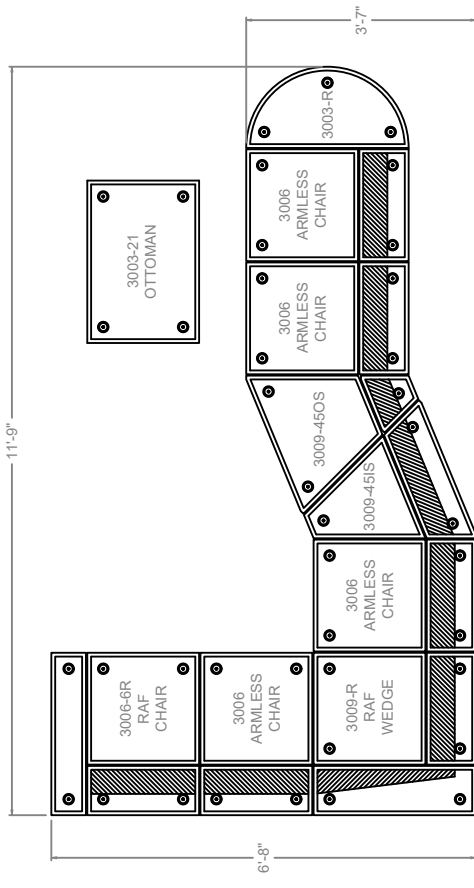
\$774



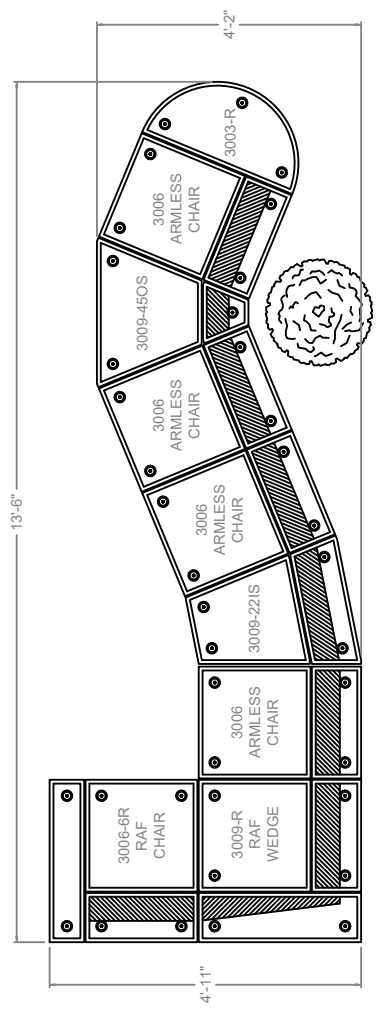
\$1049



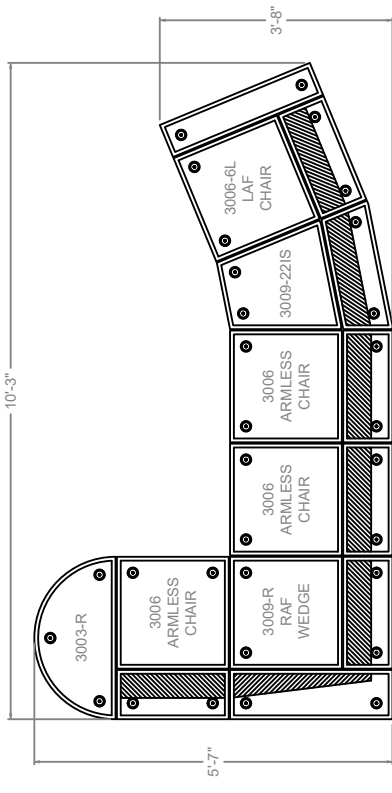
\$2061



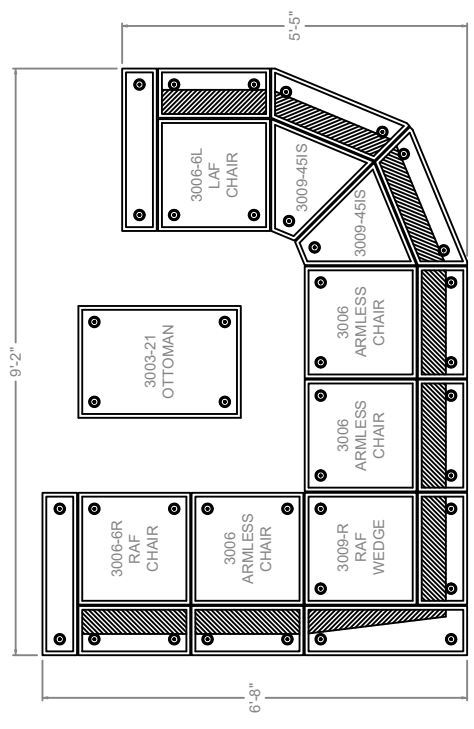
\$2960



\$2723

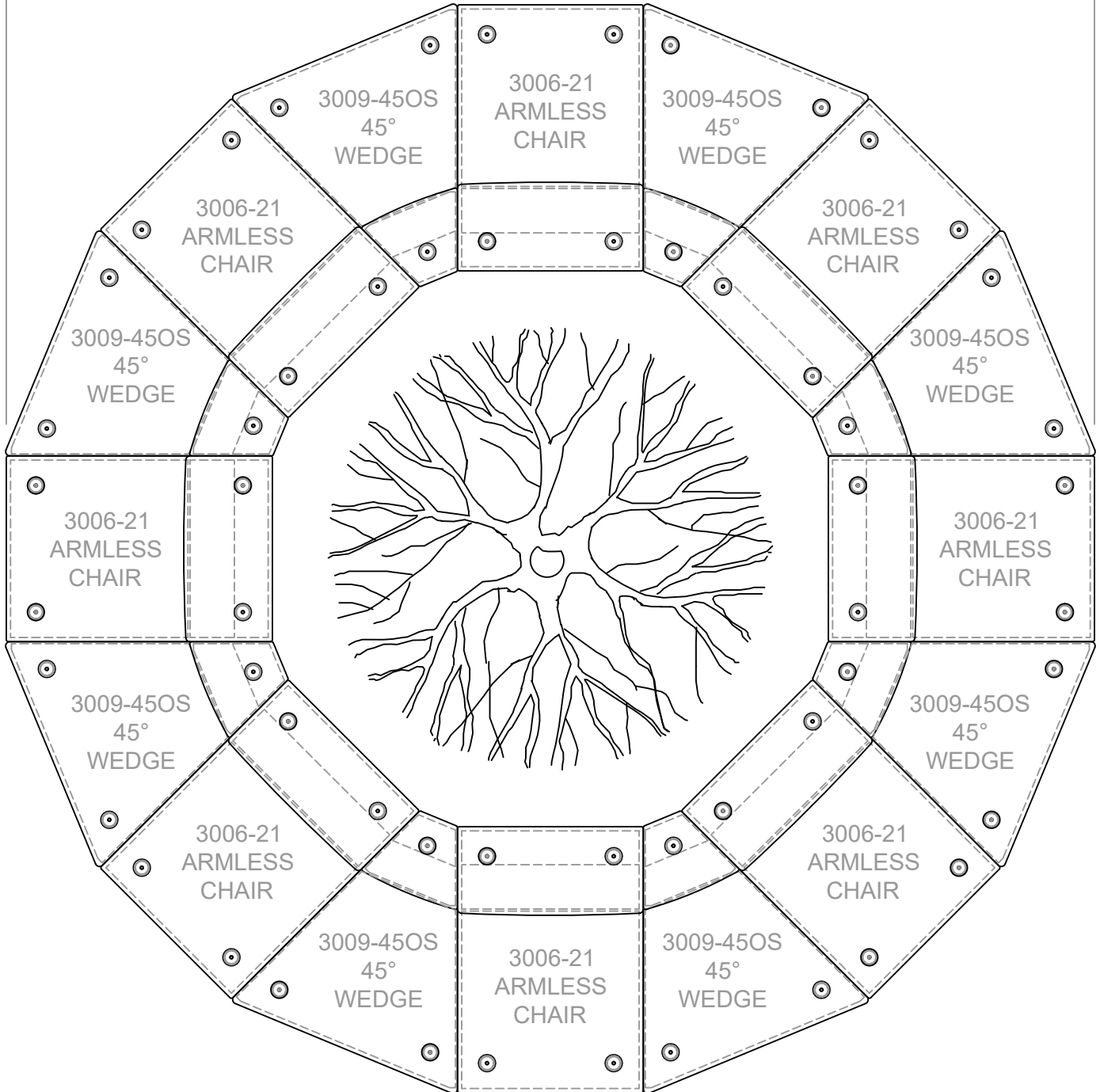


\$2136

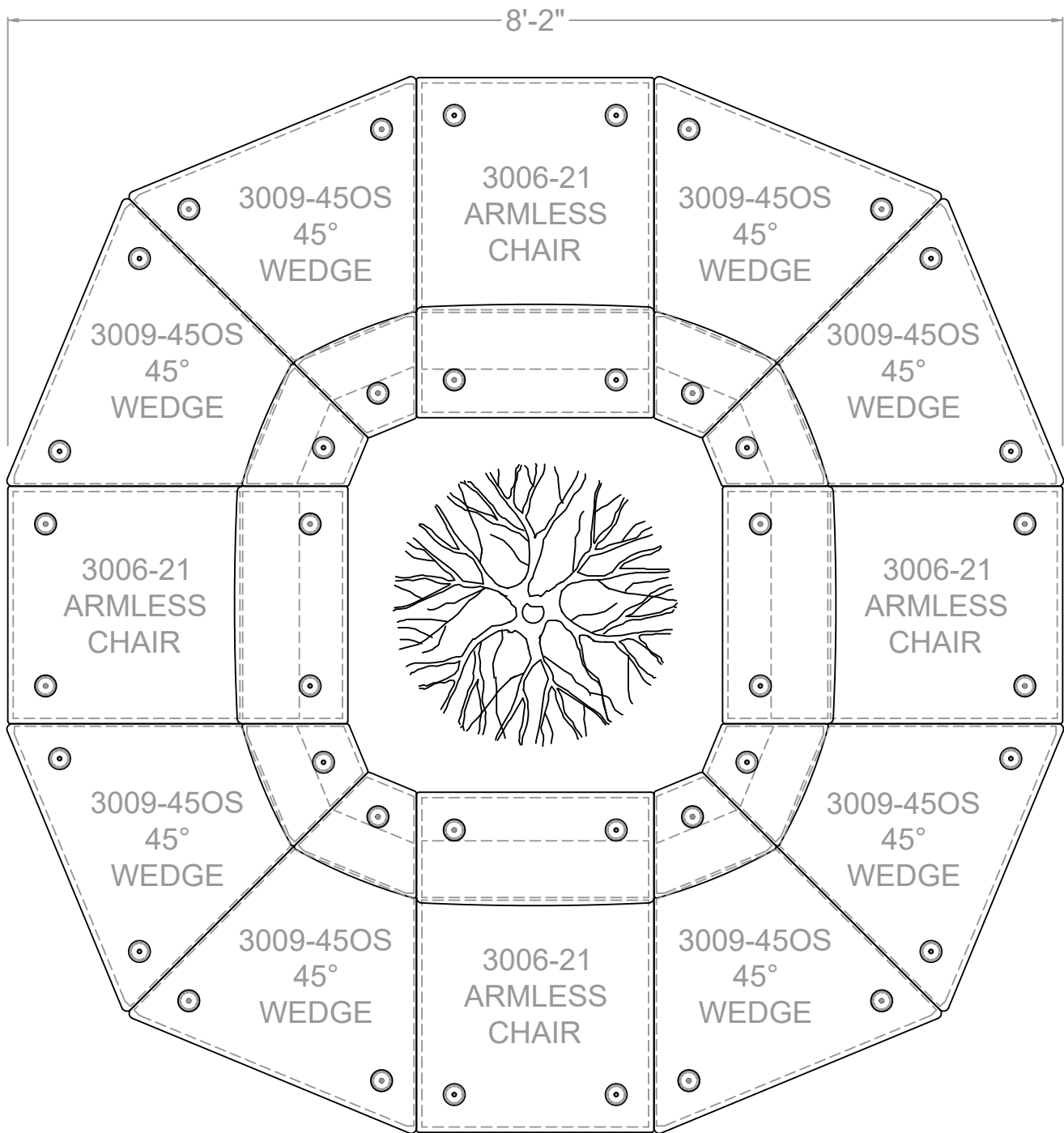


\$2847

10'-9"

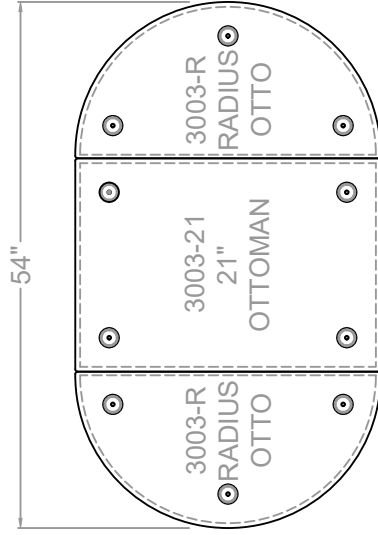
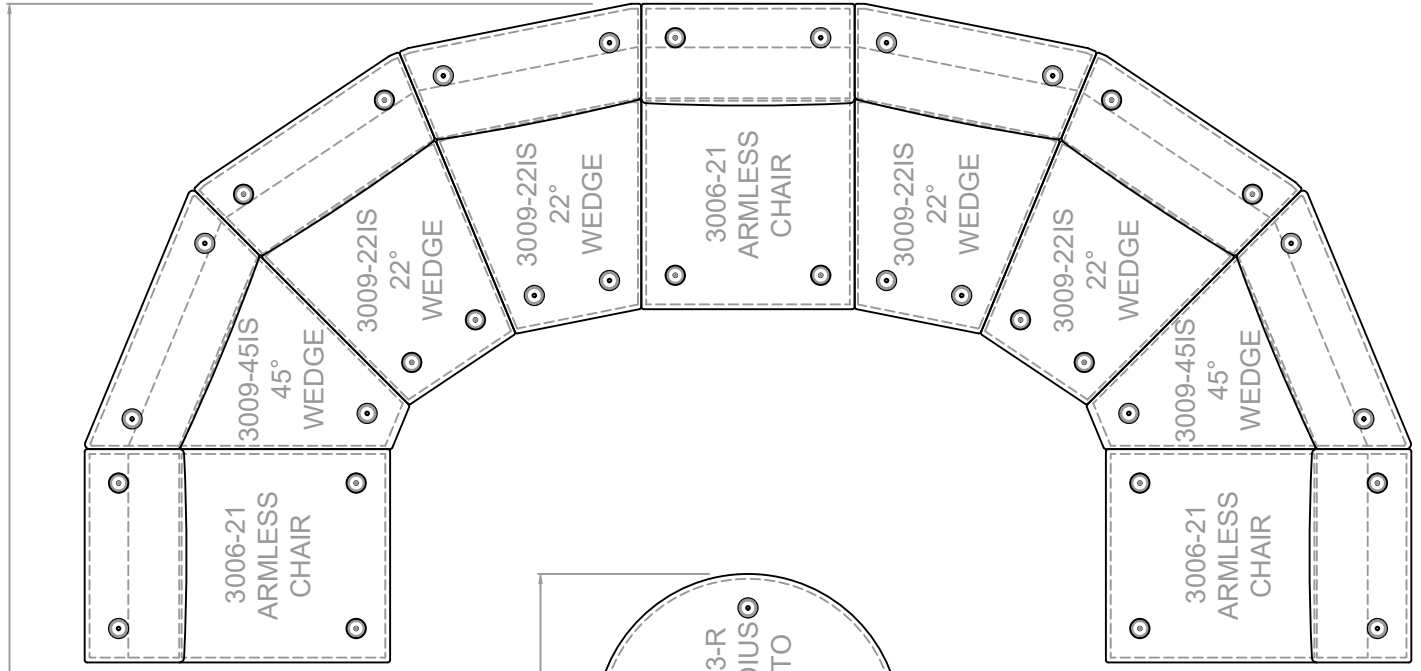


\$4696



\$3596

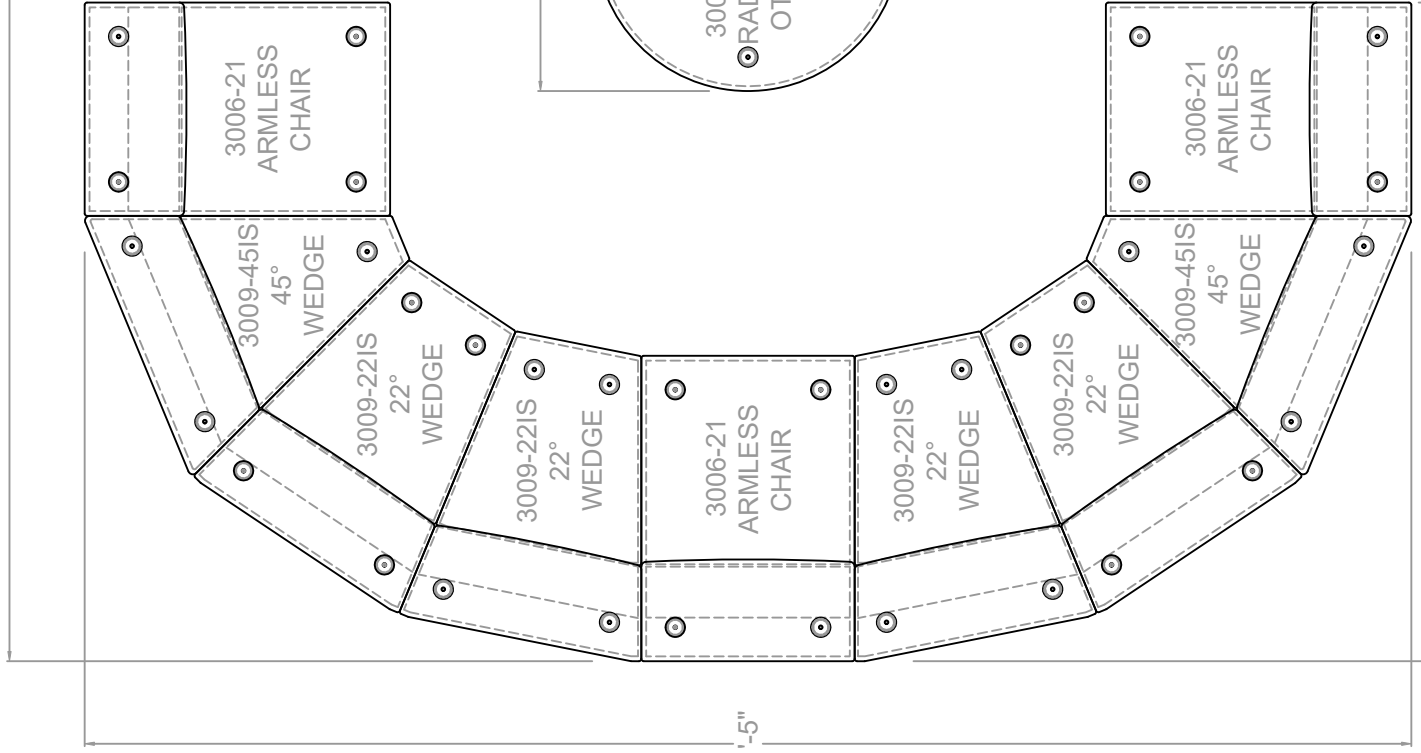
14'-4"

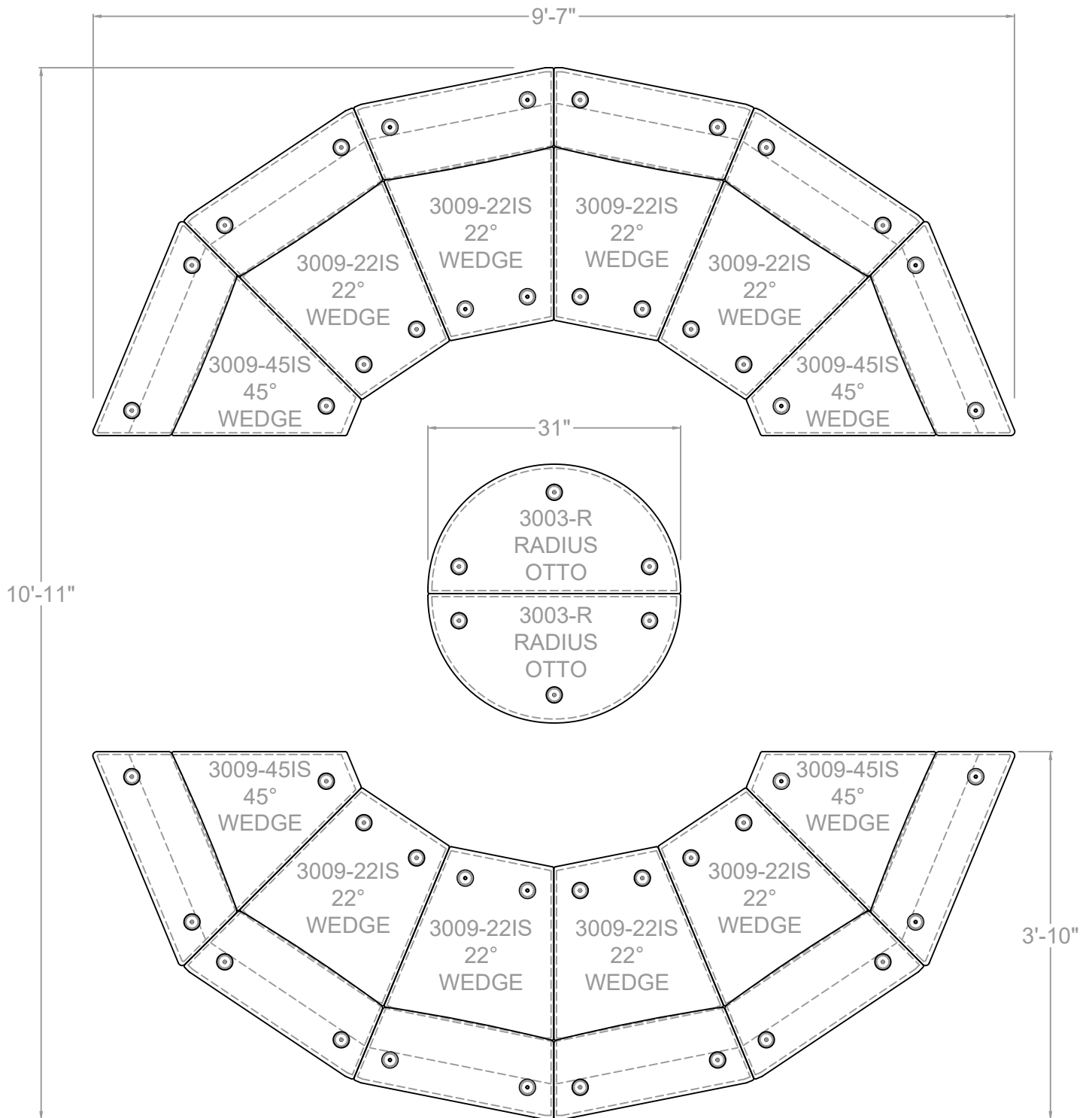


\$6081

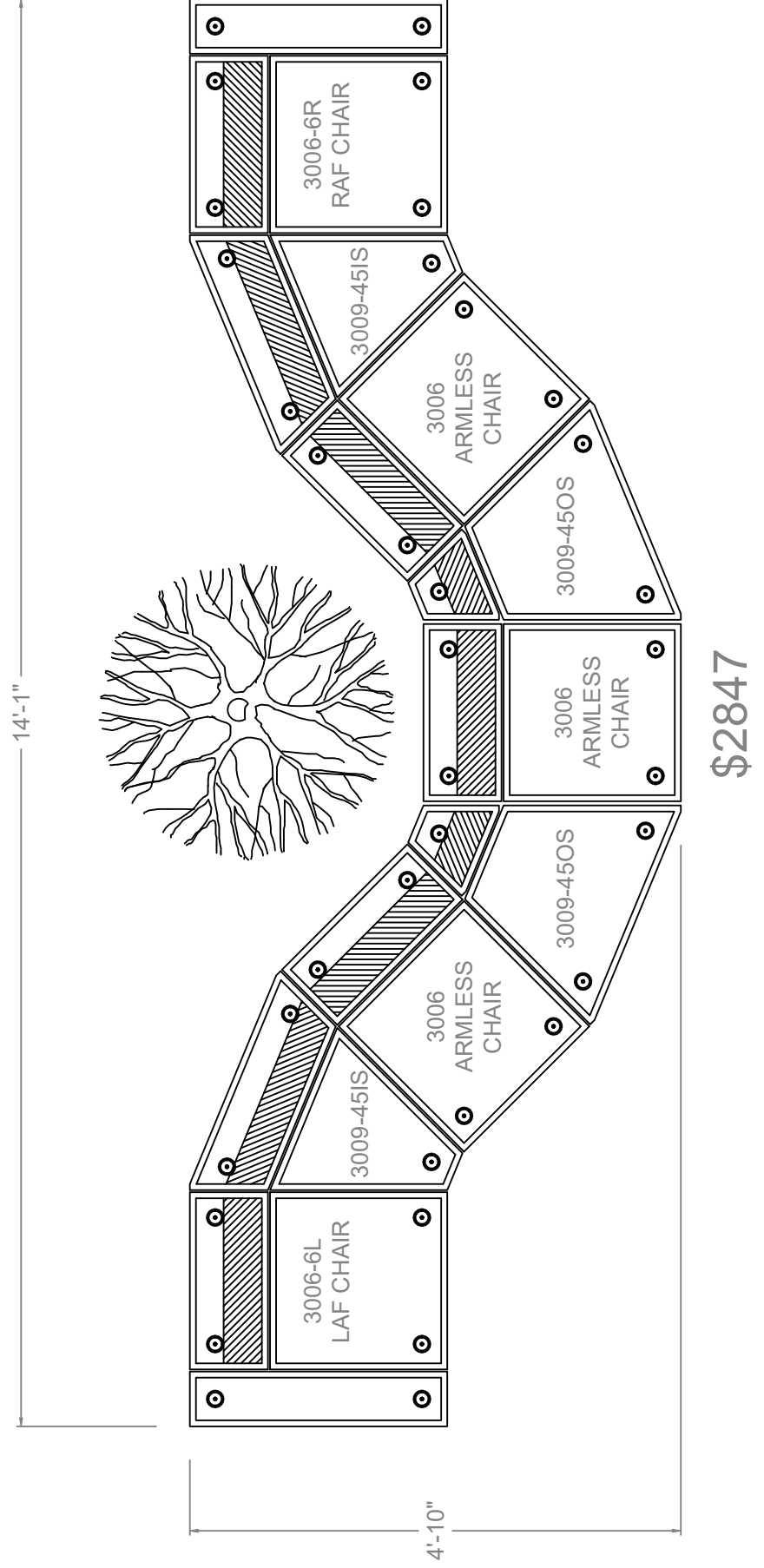
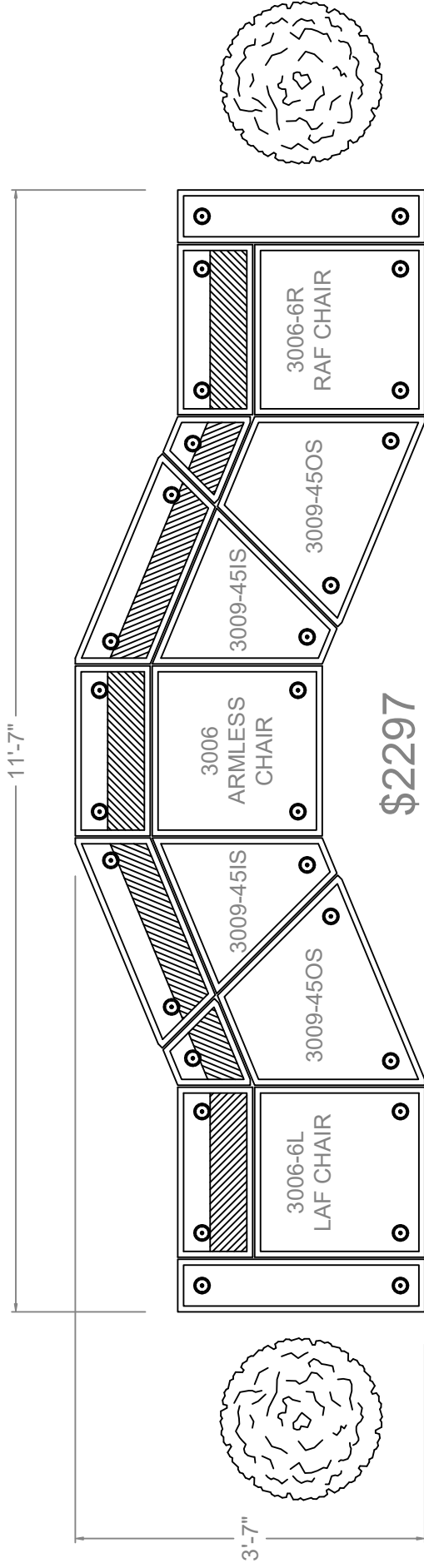
11'-5"

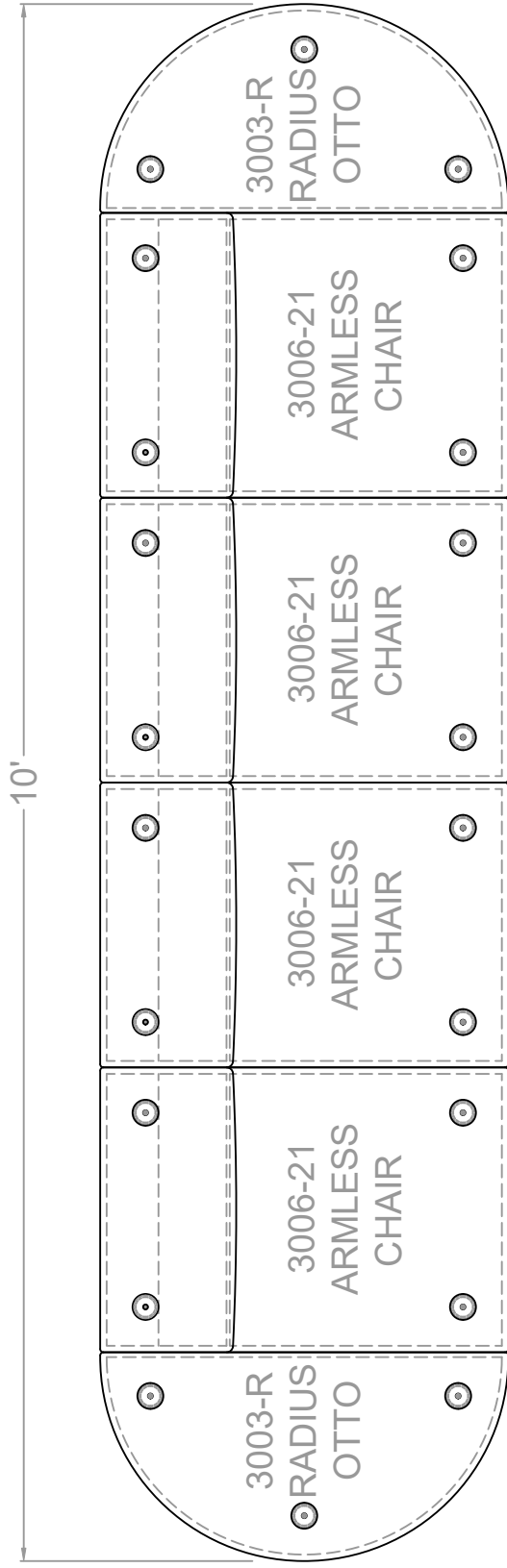
5'-8"



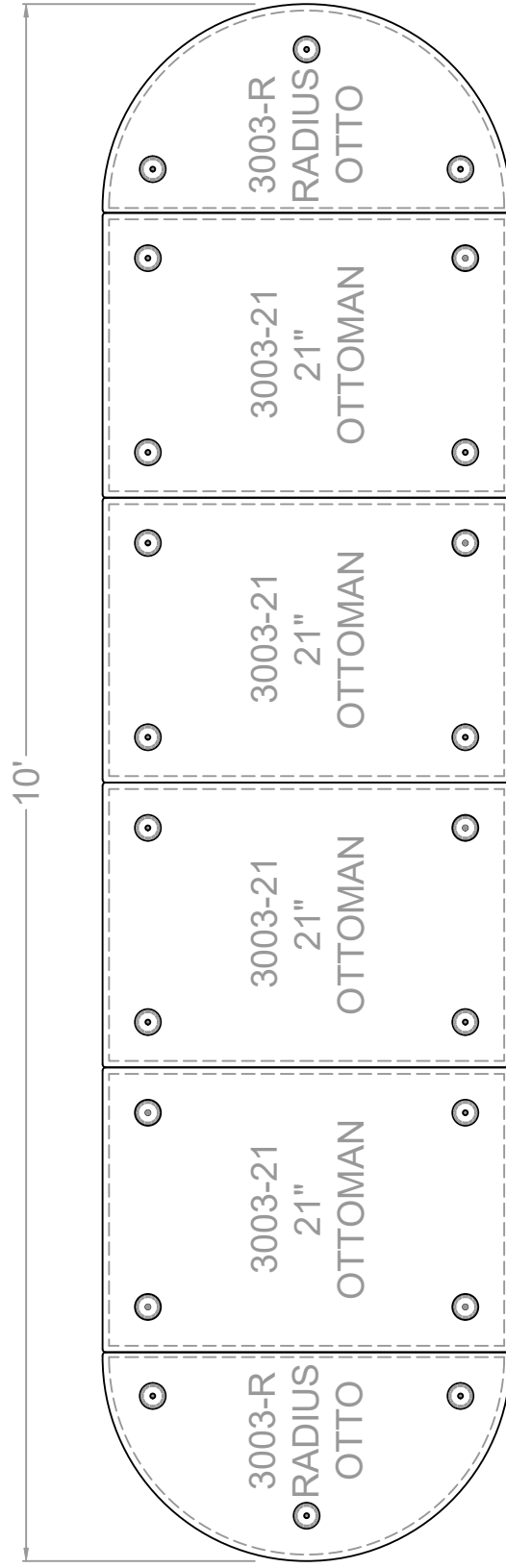


\$4194



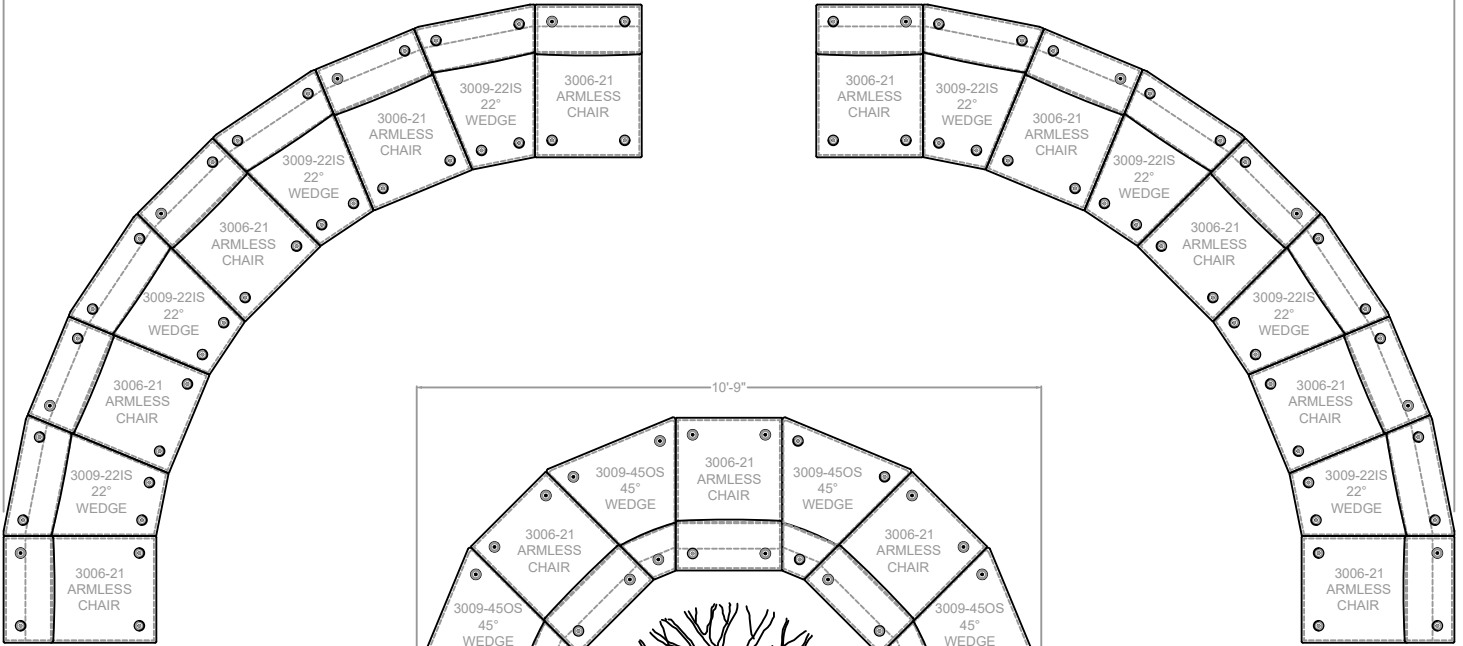


\$1550

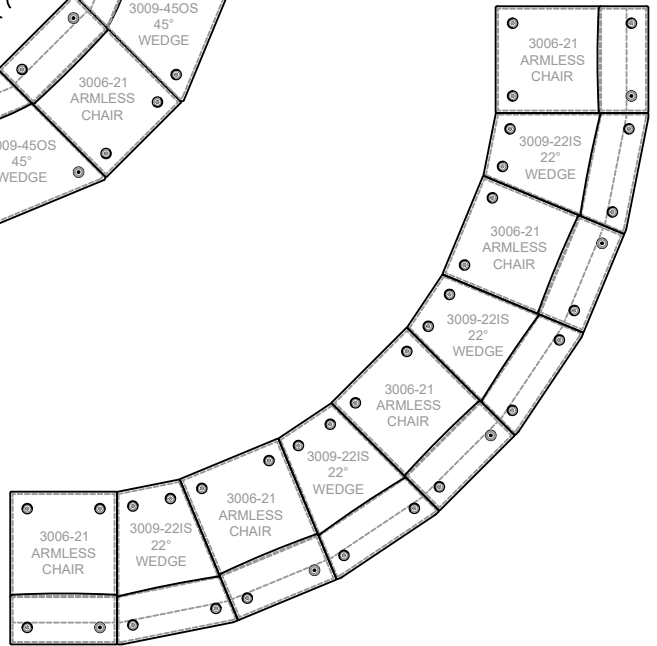
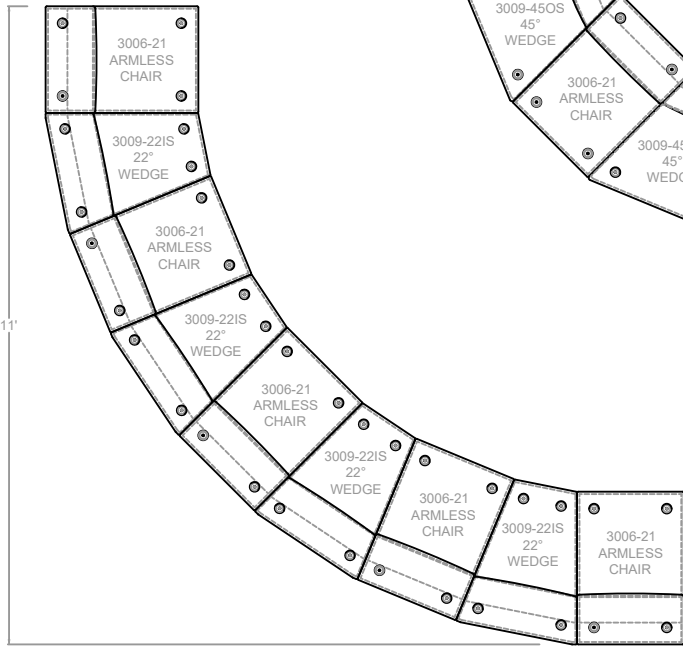
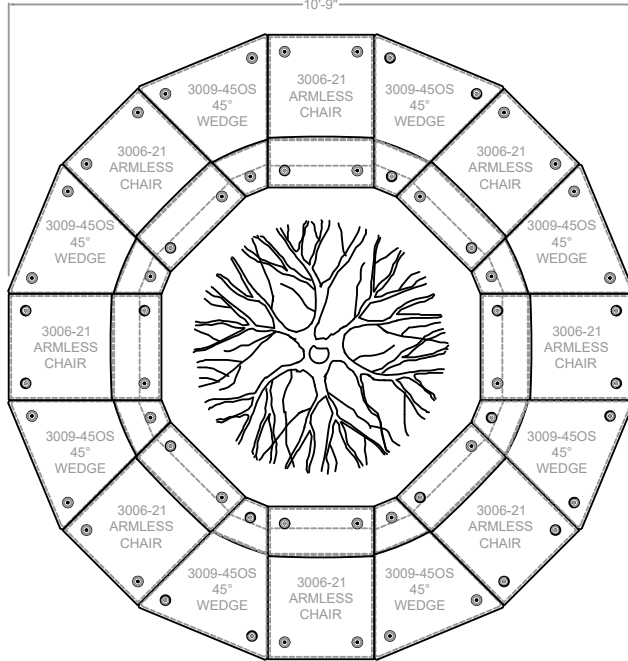


\$1398

24'-11"



10'-9"



11'

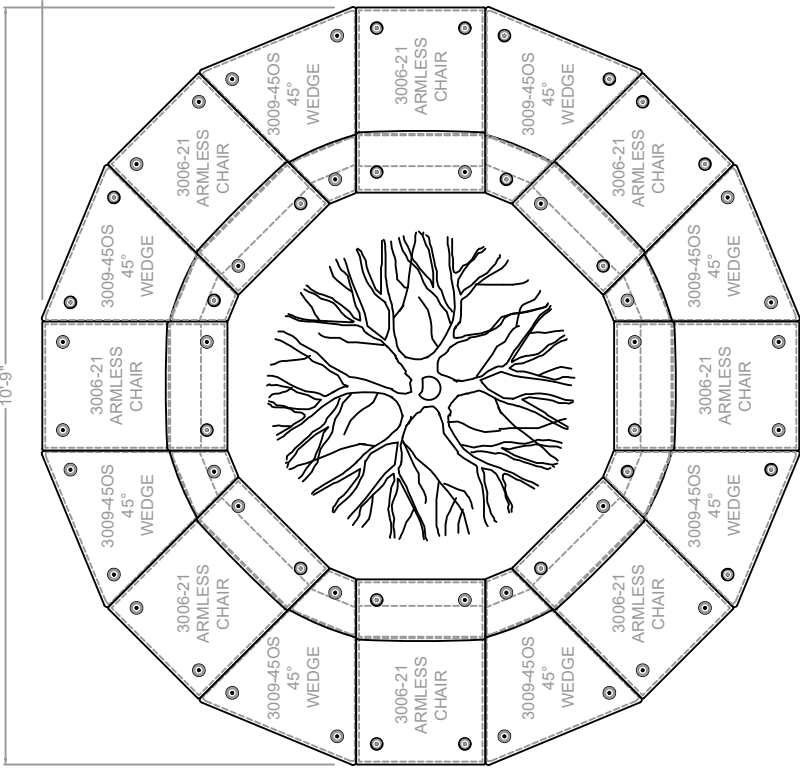
\$15,188

23'-9"

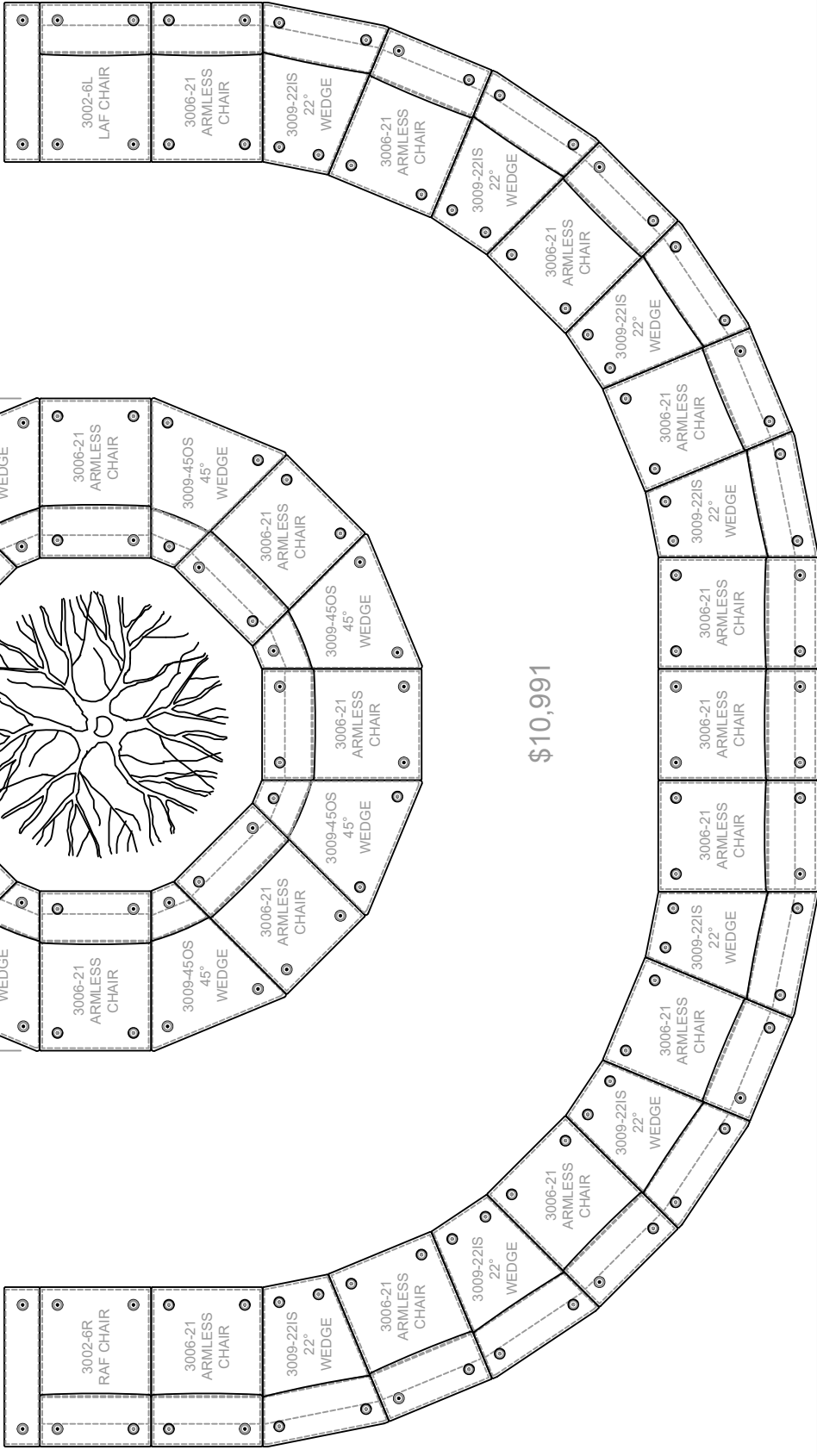
10'-9"

17'-3"

13'-5"



\$10,991

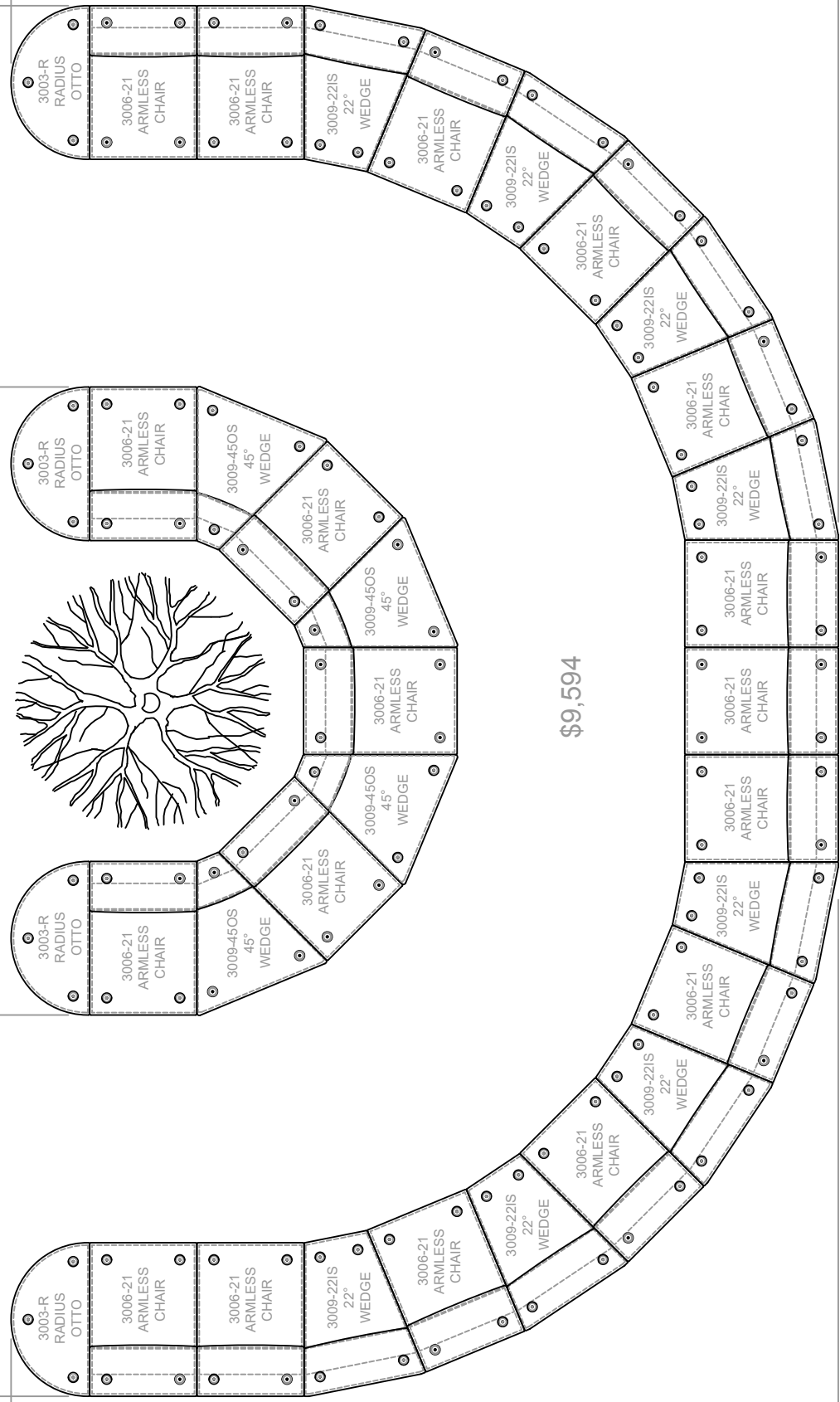
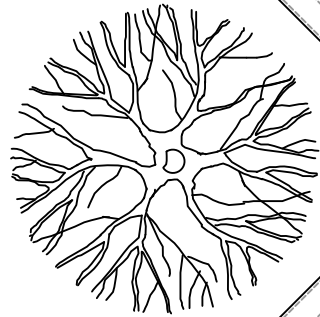


23'-9"

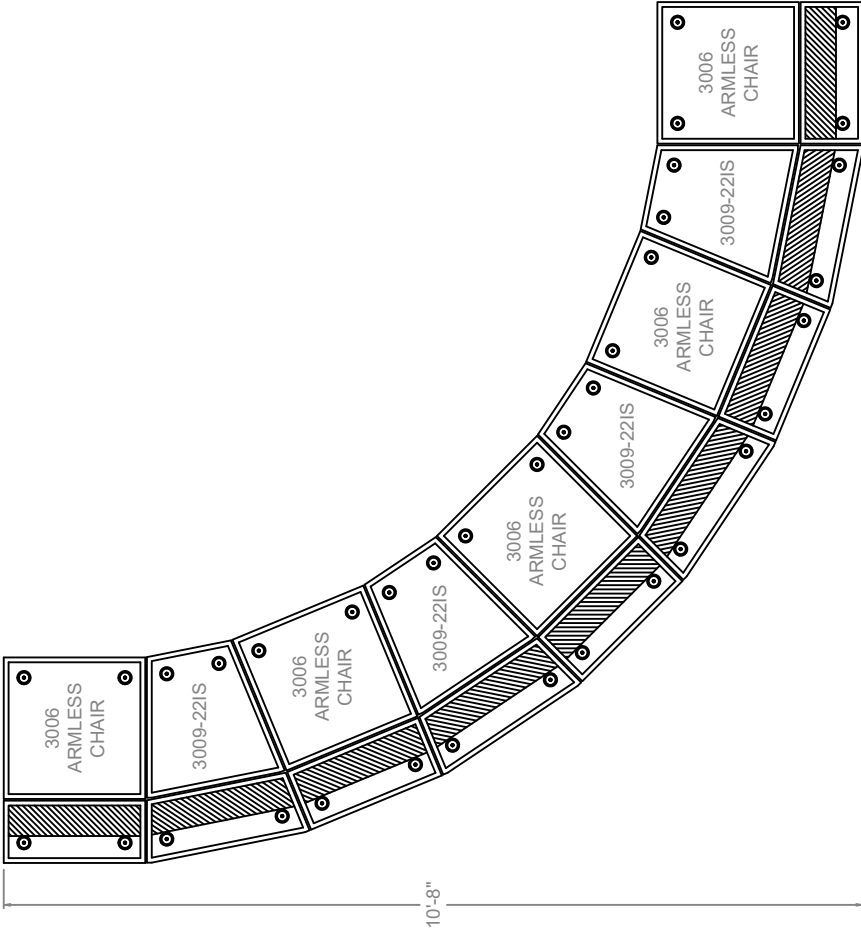
10'-9"

14'-2"

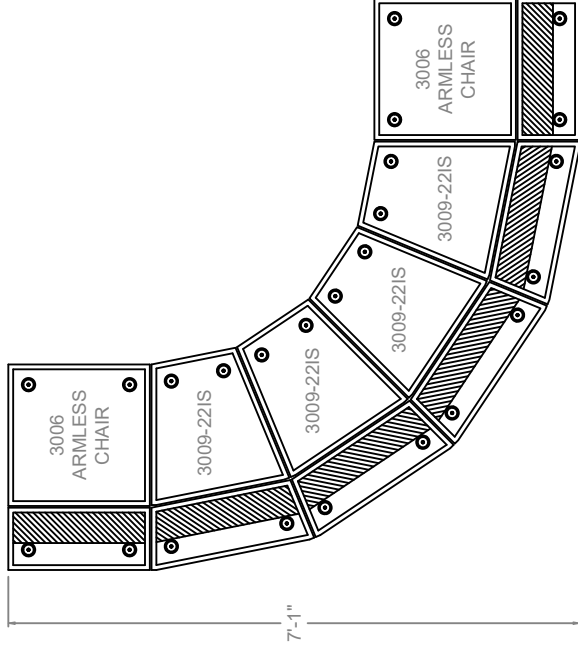
14'-2"



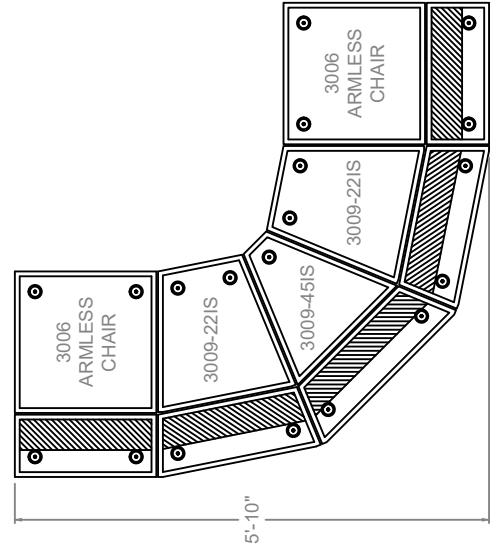
\$9,594



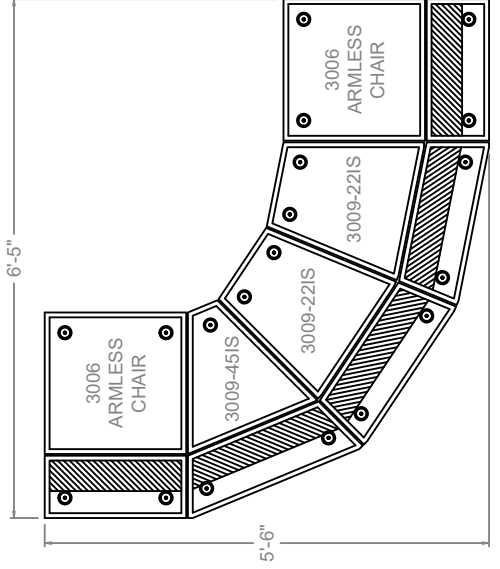
\$2623



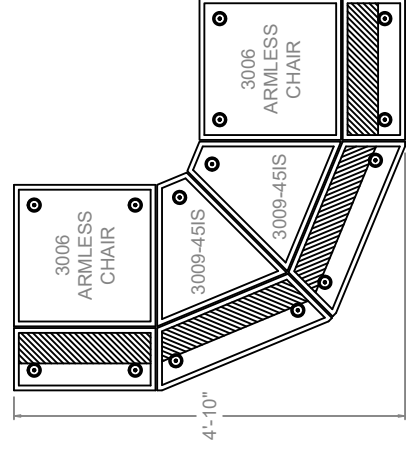
\$1798



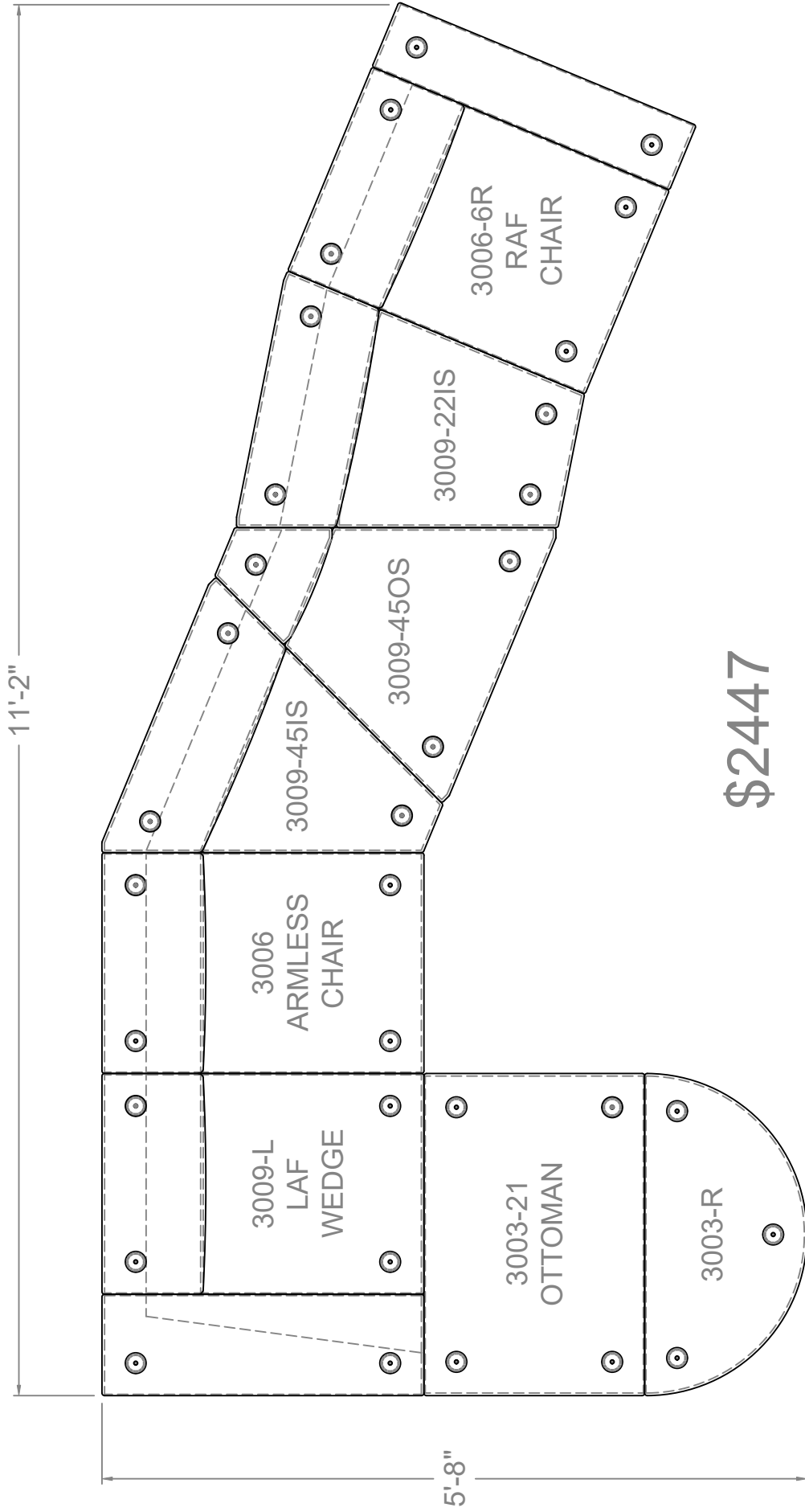
\$1486



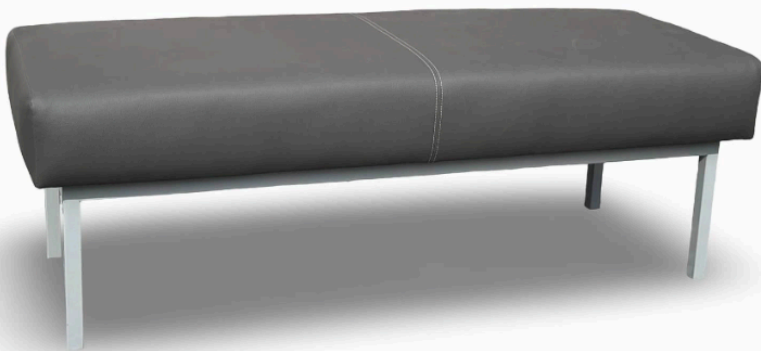
\$1486



\$1174



NEW FOR 2026



Laminate Tops Lead Times Vary Based On Colors

THE SHIFT
FURNITURE

PRIMARY BENEFITS

- Flexible layouts
- Lower long-term maintenance costs
- Commercial-grade durability
- Easy refresh cycles
- Superior comfort
- Durable table options
- Stable module connections

IDEAL APPLICATIONS

- Universities
- Corporate offices
- Multifamily spaces
- Healthcare waiting areas
- Hospitality lounges
- Libraries & public spaces

For any questions about colors or lead time contact us at 423-730-0123



The Shift Furniture(TM) Modular Upholstery Group - Markering Summary

PRODUCT OVERVIEW

The Shift Furniture(TM) is a fully modular seating system designed for modern common spaces. It offers commercial durability, design....

KEY SELLING PILLARS

1. Modular & Reconfigurable

Endless layout options for evolving spaces.

Perfect for lobbies, lounges, and collaboration zones.

2. Fully Removable & Replaceable Covers

Entire covers can be swapped to refresh spaces.

Extends furniture lifespan and reduces long-term costs.

3. CNC Mortise-and-Tenon Frame Construction

Precision CNC joinery for exceptional rigidity.

Withstands years of commercial-level use.

4. Premium Comfort System

High-density 2.5 foam core for long-lasting support.

Gel foam topper for a cooler, more luxurious sit.

5. Alligator Clip Connection System

Locks modules together securely.

Prevents drifting and maintains clean lines.

Allows quick, tool-free reconfiguration.

6. High Pressure Laminate (HPL) Table Tops

Durable, scratch- and stain-resistant.

Easy to disinfect and perfect for high-use tables.



Specifications and Warranty

Frame

Fully upholstered frames are constructed of CNC routed furniture grade plywood and or solid hardwood and most of the time a combination of both. All of our wood comes from a 100 renewable green source certified by the National Forestry Service. The frame carries a 10-year warranty under normal commercial use.

Seating system and Foam

The seating system consists of 2.5 HR polyurethane foam with 45lbs ILD. Each seat is topped in memory foam with a oz low melt fiber. All foam meets CA 117 standards. All foam seats are warrantied for 10 years to hold 90 of its height and resiliency.

Seams

All seams are sewn with computerized sewing machines that guarantee a constant stitch count of 7 per inch. These machines automatically back tack and guaranty seams will not pull out due to operator errors. We use only bonded thread that finishes better and has more strength than other commercial threads.

Seat Deck

All our seat decks are carefully woven Pirelli webbing with 10-year full replacement warranty.

Fabric

All fabric is covered by the original mill warranty. PHG Enterprises does not warrant any fabric beyond the stated warranty of the fabric manufacturer.

Proudly Made in the USA

Athens, TN





 **LIGHTNING
FABRICATORS**

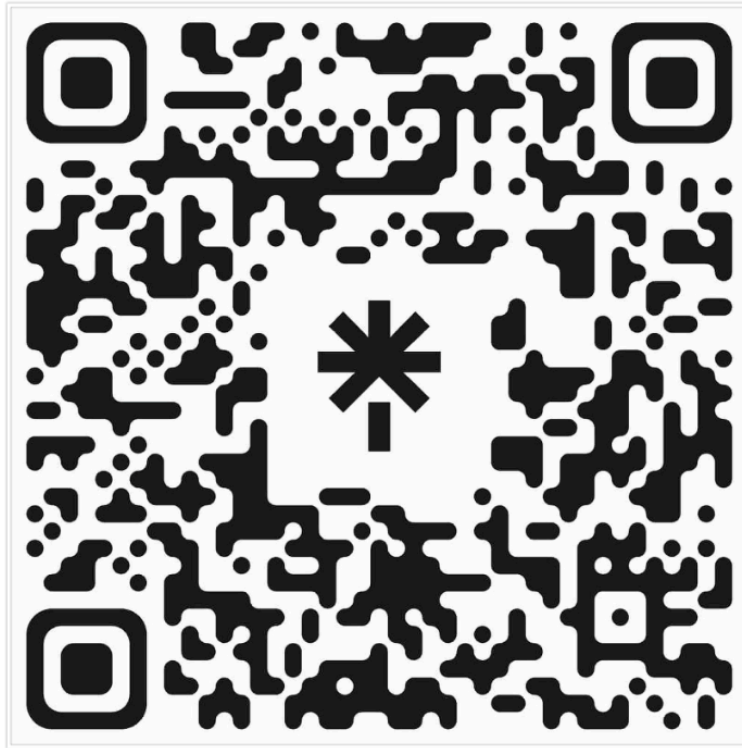


**PHG
CABINETS
& COUNTERTOPS**

You Can Find More Information About Our Company And Partners At The Link Below.

We Provide The Following Services, Solutions, And Products

Soft Seating, Cabinetry, CNC Routing, Locker Area Furniture, Upholstery, Cut and Sew



If You Would Like To View Our Shift Furniture In Augmented Reality
Scan The Link Below With Your Apple iPhone To Access The
Models



PHG ENTERPRISE
SOURCING SOLUTIONS

THE SHIFT
FURNITURE

PHG Enterprise

700 George Street, Athens, TN 37303

423-730-0123

WWW.PHGENTERPRISES.NET